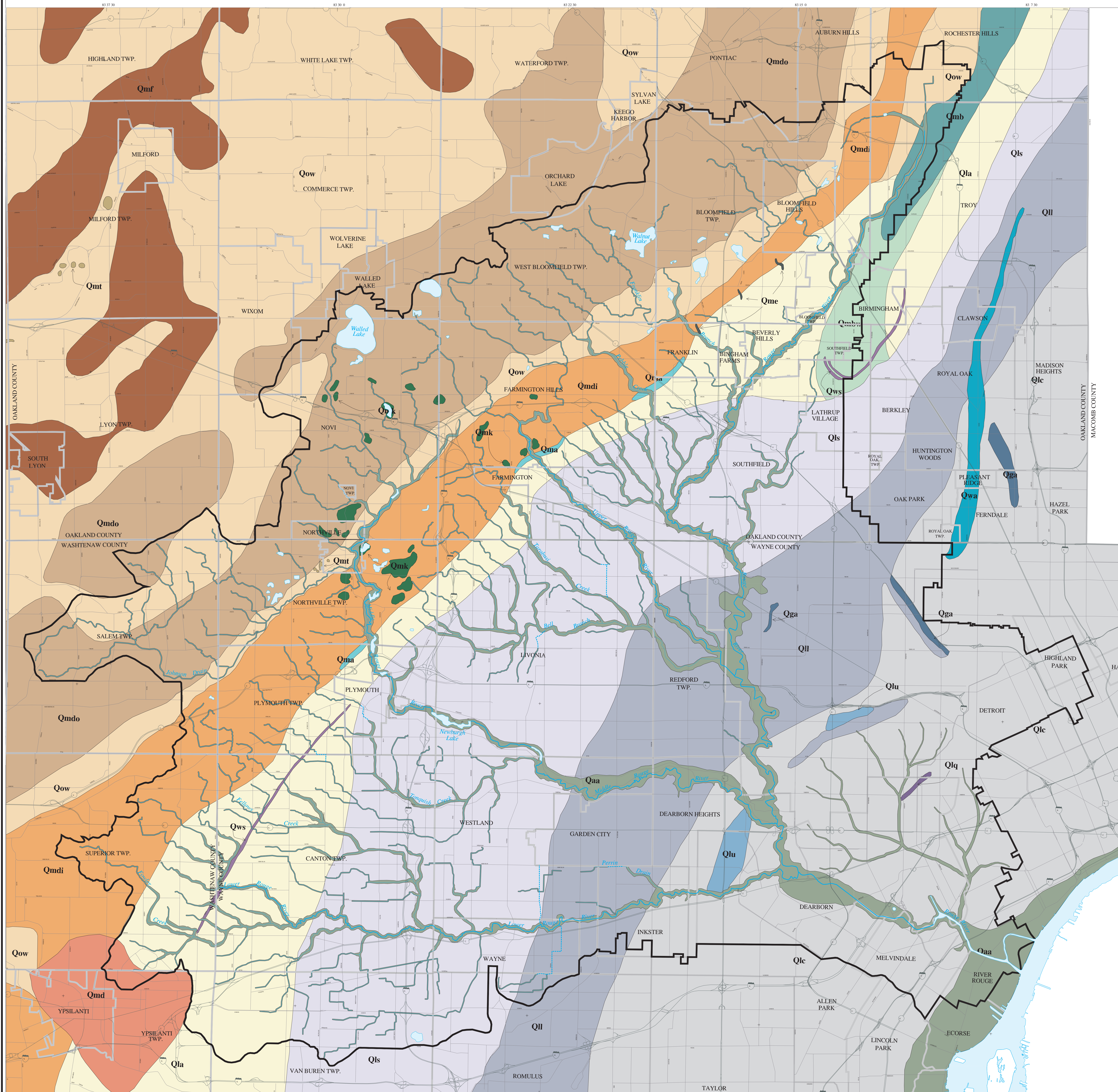
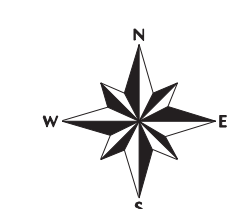


# ROUGE RIVER WATERSHED Surface Geology



## LEGEND

- Rouge watershed boundary
  - - - County boundaries
  - City/township boundaries
  - Highways
  - County roads
  - Rouge River major branches
  - Tributaries
  - ..... Enclosed drains
- 
- Surface Geologic Features
- Fort Wayne Moraine (Qmf)
  - Defiance Moraine (Outer Ridge) (Qmdo)
  - Defiance Moraine (Inner Ridge) (Qmdi)
  - Birmingham Moraine (Qmb)
  - Birmingham Water Laid Moraine (Qmbw)
  - Glacial Outwash (Qow)
  - Eskers (Qme)
  - Kames (Qmk)
  - Kettles (Qmt)
  - Delta (Qmd)
  - Glacial-lacustrine (sandy clay) (Qla)
  - Glacial-lacustrine (sand) (Qls)
  - Glacial-lacustrine (sandy and silty clay) (Qll)
  - Glacial-lacustrine (upper clay) (Qlc)
  - Glacial-lacustrine (beach or beach ridge)
  - Maumee Glacial Lake Stage (Qma)
  - Whittlesey Glacial Lake Stage (Qws)
  - Wayne Glacial Lake Stage (Qwa)
  - Grassmere Glacial Lake Stage (Qga)
  - Lundy Glacial Lake Stage (Qlu)
  - Early Algonquin (Qla)
  - Recent Fluvial Deposits (Qaa)



1 inch = 1 mile



MAP PROJECTION:  
Michigan State Plane Coordinate System, south zone (Lambert Conformal Conic Projection), FIPS zone 2113, NAD 27, feet.

DATA SOURCES:  
Rouge watershed boundary - RPO Modeling Team data, May 1994.  
Highways - MDNR MIRS data, 1985, from 1:24,000 USGS quadrangles, photorevised 1973-1983.  
County roads - MDNR MIRS data, 1985, from 1:24,000 USGS quadrangles, photorevised 1973-1983.  
County boundaries - MDNR MIRS data, 1985, from 1:24,000 USGS quadrangles, photorevised 1973-1983.  
City/township boundaries - MDNR MIRS data, 1985, from 1:24,000 USGS quadrangles, photorevised 1973-1983.  
Rouge River major branches & tributaries - EPA Reach data, 1991, from 1:100,000 USGS DLGs, 1983.  
Modified by RPO Modeling Team, January 1994.  
Enclosed drains - RPO Modeling Team data (modifications to Reach), January 1994.

Original Surface Geology map compiled by Daniel T. Rogers, Clayton Environmental Consultants Inc., January 1997.

For additional information regarding the source of RPO derived data, please contact the Wayne County Rouge Program Office. Data depicted on this map were derived from source maps with various scales and levels of accuracy. This information is illustrated here for general reference purposes only. Map symbology is not to scale and therefore does not depict site-specific conditions. This map should not be used to evaluate information related to individual parcels of property.

The Rouge River National Wet Weather Demonstration Project is funded, in part, by the United States Environmental Protection Agency grants #X995743-01, -02, -03.



**ROUGE RIVER NATIONAL WET WEATHER DEMONSTRATION PROJECT**  
Wayne County Rouge Program Office (RPO)  
220 Bagley Avenue  
Michigan Building, Suite 920  
Detroit, Michigan 48226  
(313) 961-0700